










LEGEND

- ★ YOU ARE HERE
-  FIRE EXTINGUISHER
-  FIRE ALARM
-  AED
-  ADA LIFT
-  SPILL STATION
-  PUBLIC TELEPHONE
-  CAMPUS TELEPHONE
-  EMERGENCY SUPPLY BOX
-  DRY STAND PIPE

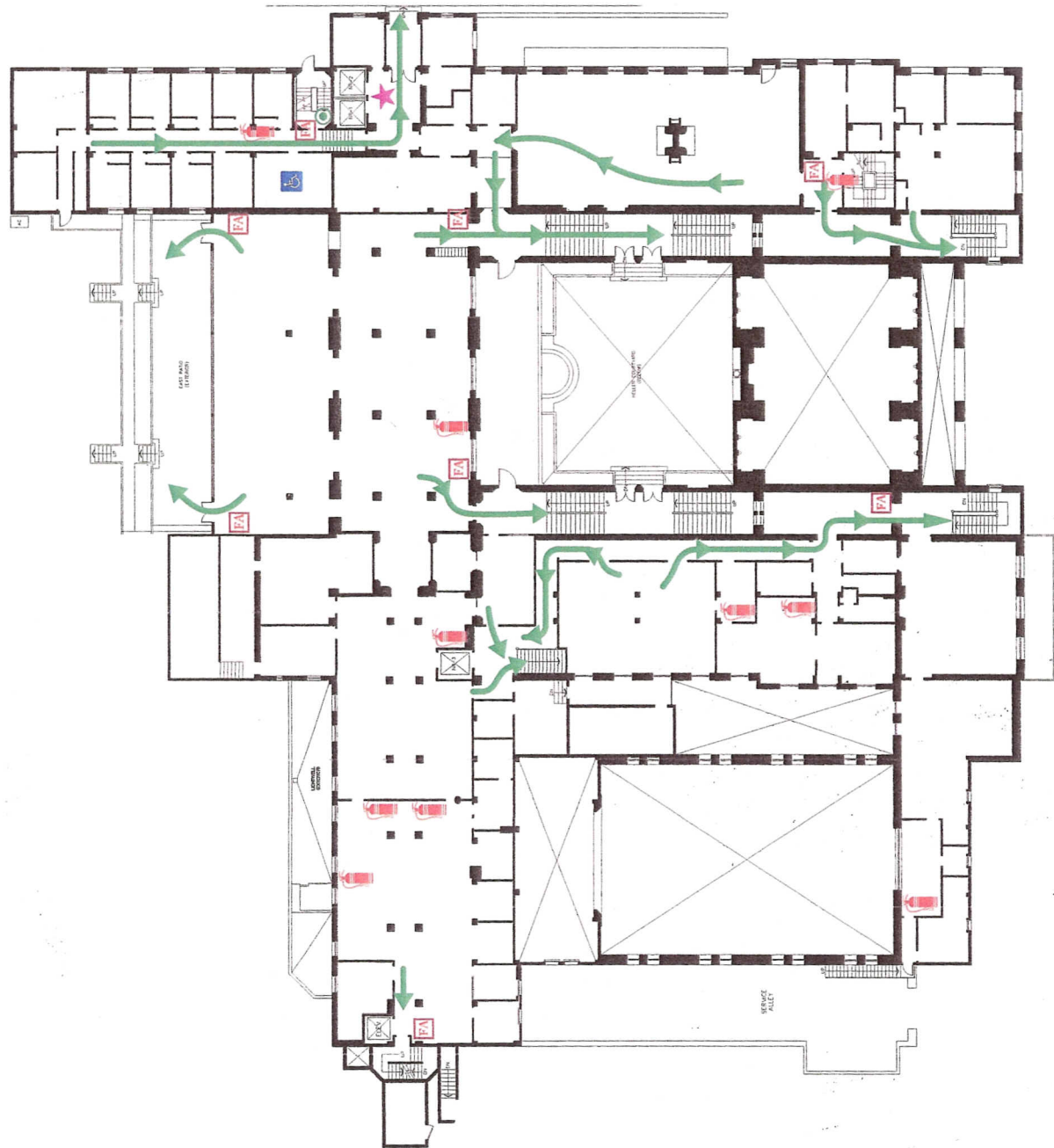
INTERNATIONAL HOUSE (CAAN 1390)
FIRST FLOOR - EGRESS
Drawing date: 10-22-09 GG

University of California, Berkeley
Facilities & Spatial Data Integration
Business & Technology Solutions
2168 Shattuck Avenue, Third Floor
Berkeley, California 94720-1560



LEGEND

- ★ YOU ARE HERE
- 🔥 FIRE EXTINGUISHER
- 🚨 FIRE ALARM
- ♿ EMERGENCY WAITING AREA
- 🚰 DRY STAND PIPE




**INTERNATIONAL HOUSE (CAAN 1390)
SECOND FLOOR - EGRESS**

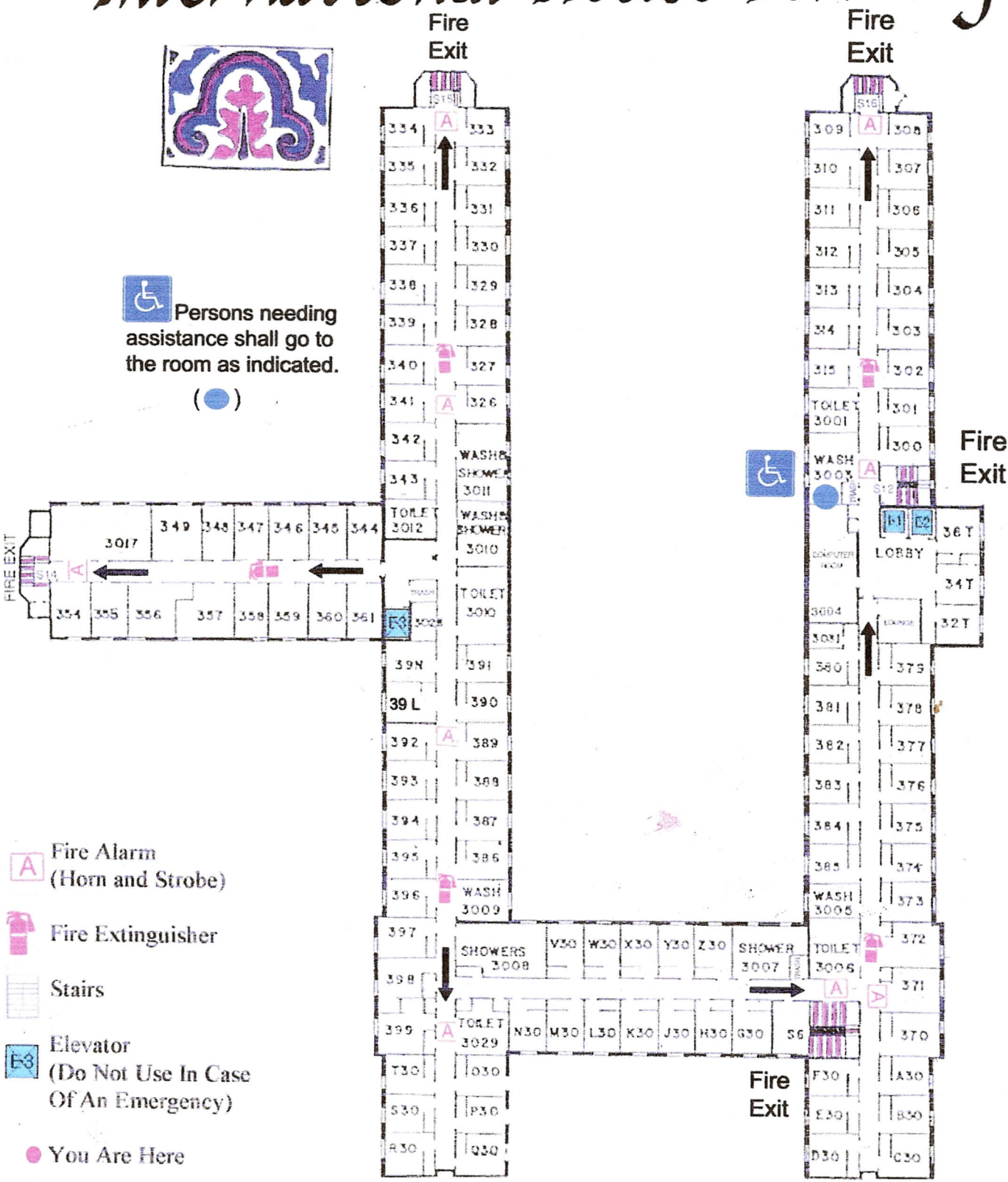
Drawing date: 10-22-09 GG






University of California, Berkeley
Facilities & Spatial Data Integration
Business & Technology Solutions
2168 Shattuck Avenue, Third Floor
Berkeley, California 94720-1560

International House Berkeley



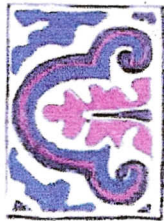
 Persons needing assistance shall go to the room as indicated.
(●)



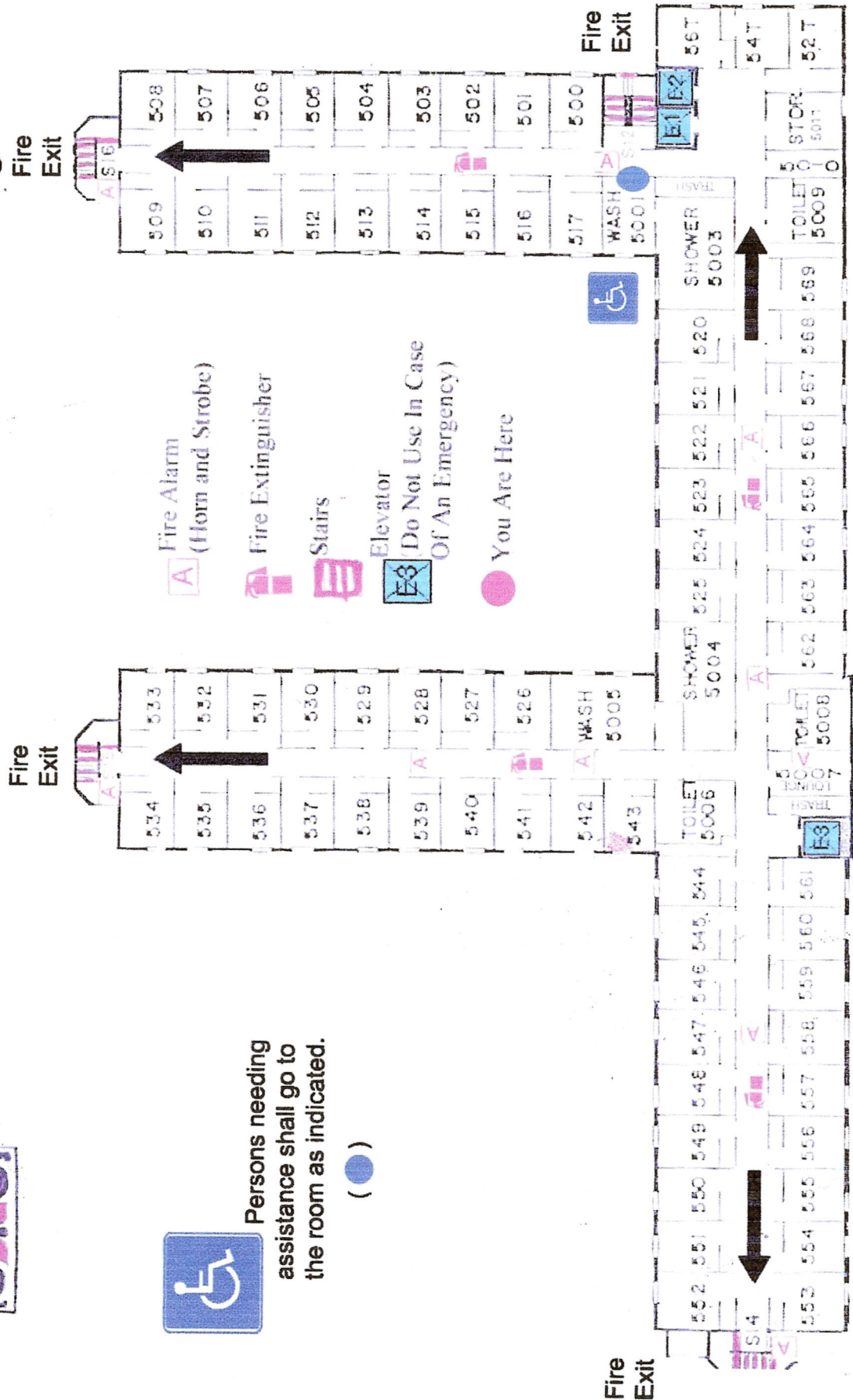
-  Fire Alarm (Horn and Strobe)
-  Fire Extinguisher
-  Stairs
-  Elevator (Do Not Use In Case Of An Emergency)
-  You Are Here

Emergency Telephone Number: 911
(from off Campus phone, pay phone or campus phone)

Third Floor



International House Berkeley

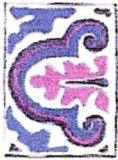


Persons needing assistance shall go to the room as indicated.

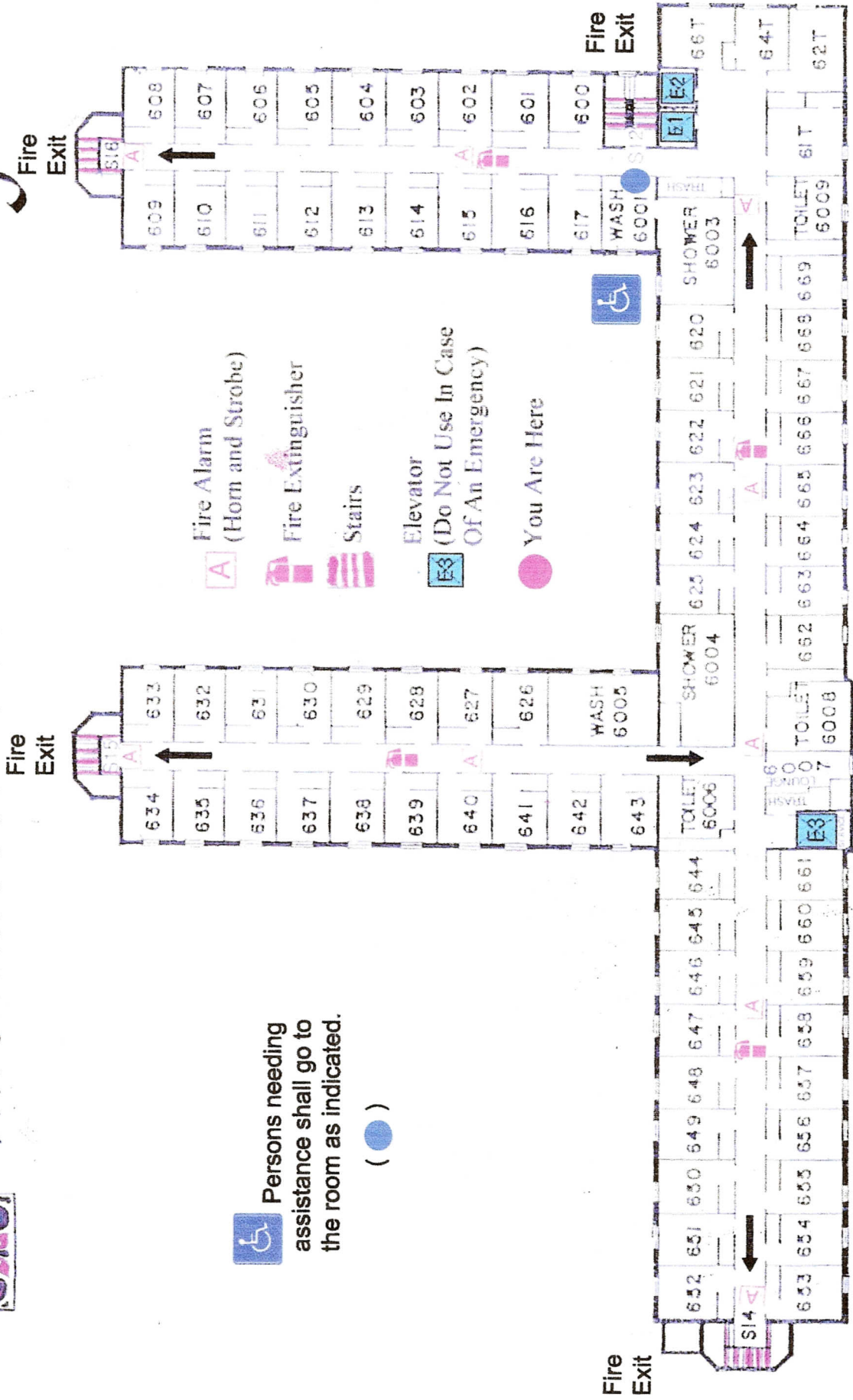


Fifth Floor

Emergency Telephone Number: 911
(from off-campus phone, pay phone or campus phone)



International House Berkeley



 Persons needing assistance shall go to the room as indicated. (●)

Emergency Telephone Number: 911
(from off-campus phone, pay phone or campus phone)

Sixth Floor

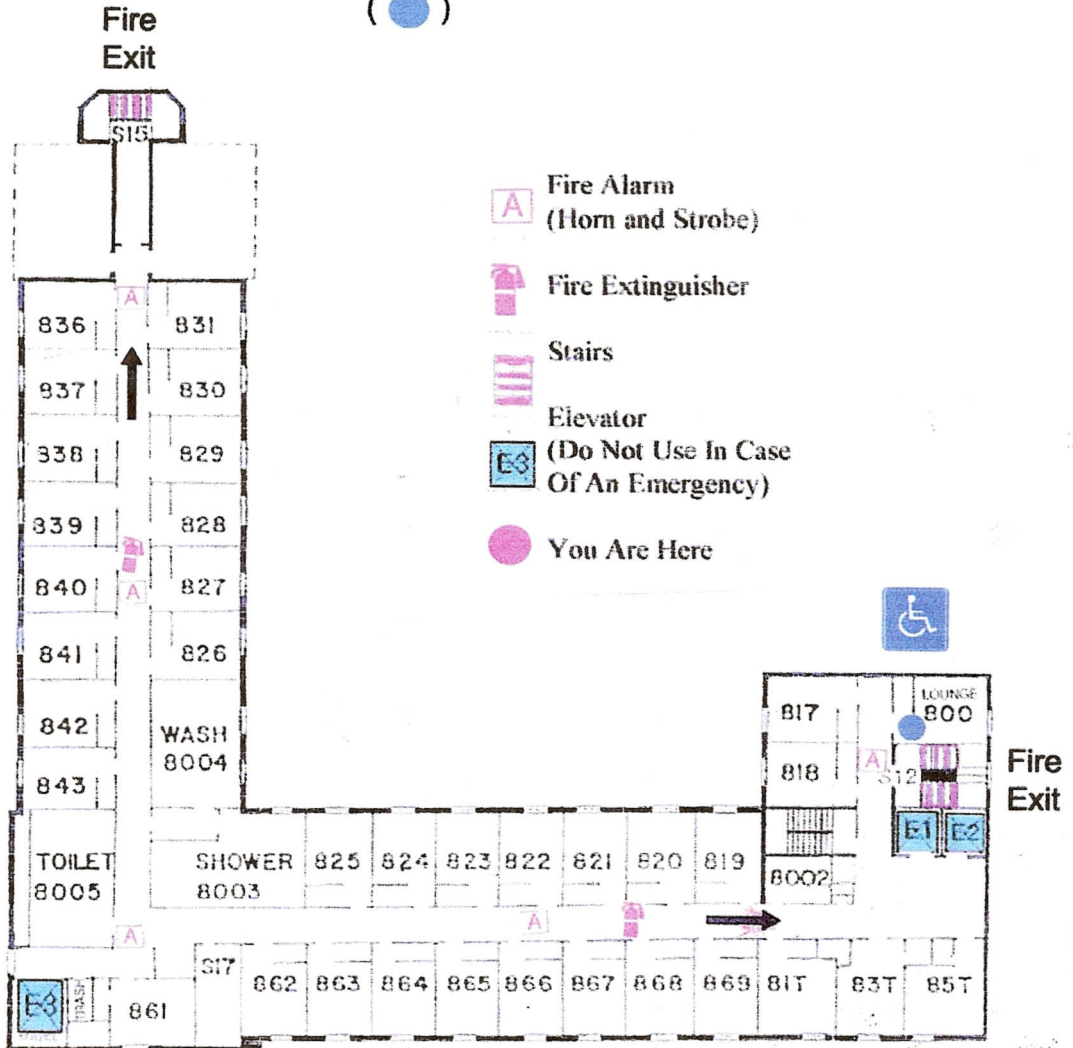


International House Berkeley



Persons needing assistance shall go to the room as indicated.

(●)



Eighth Floor

Emergency Telephone Number: 911
(from off-campus phone, pay phone or campus phone)